



## STONEWALL LESSON PACK –

### LGBT History Month 2021

This LGBT History Month, we're focussing on the lives and work of some courageous LGBT women – for EYFS and Year 1, we've chosen Catherine Duleep Singh. LGBT History Month was founded by Schools Out, who have been campaigning for LGBT inclusive education for 47 years. Due to Covid-19, we've created home learning packs as well as lesson packs to ensure that your students can benefit from the lesson content wherever they're learning. You'll find the home learning pack that mirrors this lesson pack on our [website](#). Each lesson pack has a PowerPoint and resources that you can use to support your whole class teaching. Adapt the content to best suit the needs of your class and to fit the amount of time you have available. We have also developed packs on this theme for pupils with SEND/ASN/ALN – these can be found on our [website](#).

### Who are Stonewall?

This resource is produced by Stonewall, a UK-based charity that stands for the freedom, equity and potential of all lesbian, gay, bi, trans, queer, questioning and ace (LGBTQ+) people. At Stonewall, we imagine a world where LGBTQ+ people everywhere can live our lives to the full. Founded in London in 1989, we now work in each nation of the UK and have established partnerships across the globe. Over the last three decades, we have created transformative change in the lives of LGBTQ+ people in the UK, helping win equal rights around marriage, having children and inclusive education.

Our campaigns drive positive change for our communities, and our sustained change and empowerment programmes ensure that LGBTQ+ people can thrive throughout our lives. We make sure that the world hears and learns from our communities, and our work is grounded in evidence and expertise.

Stonewall is proud to provide information, support and guidance on LGBTQ+ inclusion; working towards a world where we're all free to be. This does not constitute legal advice, and is not intended to be a substitute for legal counsel on any subject matter. To find out more about our work, visit us at [www.stonewall.org.uk](http://www.stonewall.org.uk).

Enjoyed this resource? Join us today!

Our expert team of qualified teachers and trainers have supported hundreds of settings in their inclusion journeys to make sure all children and young people are free to be themselves. [Our membership programmes for schools and colleges, and for children and young people's services, have something to offer every setting.](#) Join us today and benefit from:

- CPD-accredited e-learning modules
- Regular professional development webinars
- Access to our award schemes
- Personalised support from our team

LGBT History Month 2021: Reception, Year 1 & 2 or P1-P3 lesson pack



All this, and more, is included in the price you pay for membership.

Looking for custom training? Our experienced trainers can provide quality training sessions for ITT providers, teaching schools, professional development networks and many other providers. Email us [education@stonewall.org.uk](mailto:education@stonewall.org.uk) to find out more and discuss your needs.

## Reception or P1

**Learning objective:** To talk about the life of someone from the past

Activity	Details	Resources
Starter: What does 'brave' mean?	<p>Ask children to explain what they think word 'brave' means. Where have they heard the word used before?</p> <p>Talk about different types of bravery or courage – overcoming a fear, trying a new challenge, speaking up for what you know is right, etc</p>	<ul style="list-style-type: none"> <li>Catherine Duleep Singh Reception P1 PowerPoint</li> <li>Photos of Catherine Duleep Singh</li> </ul>
Whole class activity: Who was Catherine?	<p>Share the LO. Explain that today the children are going to be learning about a brave woman called Catherine Duleep Singh.</p> <p>Look at some photos of Catherine. Ask the children: What might we be able to tell about Catherine? Was she rich or poor? Was she alive recently or a long time ago? What were the clues that led them to their answers?</p> <p>Work through the PowerPoint about Catherine Duleep Singh and her life.</p> <p>Ask the children to reflect on the aspects of Catherine's life that required her to be brave.</p>	<p><b>Other:</b></p> <ul style="list-style-type: none"> <li>A3 paper</li> </ul>
Individual activity: A portrait of Catherine	Children draw a picture of Catherine Duleep Singh and write some words or a sentence about her.	
Small group with an adult: Fact file	<p>In a small group with an adult, children should work together to create a fact file about Catherine Duleep Singh on a piece of A3 paper.</p> <p>They should choose a picture of Catherine to cut out and stick to the fact file.</p>	



	<p>Each child should contribute a fact to the fact file – either verbally for the adult to scribe, or by writing a sentence themselves.</p>	
Plenary: Reflection	<p>Ask the children: What was the most interesting thing you found out about Catherine Duleep Singh? Think. Pair. Share.</p>	

## Year 1 &amp; 2 or P2 &amp; P3

**Learning objective:** To ask questions about events from the past

Activity	Details	Resources
Starter: What does 'brave' mean?	<p>Ask children to explain what they think word 'brave' means. Where have they heard the word used before?</p> <p>Talk about different types of bravery or courage – overcoming a fear, trying a new challenge, speaking up for what you know is right, etc</p>	<ul style="list-style-type: none"> <li>• Catherine Duleep Singh Year 1 and 2 P2 and P3 PowerPoint</li> <li>• Catherine Duleep Singh photo pack</li> <li>• Catherine Duleep Singh Factfile (for use by the adult in the hotseat)</li> </ul>
Group activity: Who was Catherine?	<p>Share the LO. Explain that today the children are going to be learning about a brave woman called Catherine Duleep Singh.</p> <p>Explain that they are going to start off by being history detectives, using their investigation skills to look at some photos and see what they can find out about Catherine.</p> <p>In groups, children discuss the photos related to Catherine Duleep Singh's life. They should suggest:</p> <ul style="list-style-type: none"> <li>• Who she was</li> <li>• How long ago she lived</li> <li>• The brave thing she might have done</li> <li>• Any other information they can find</li> </ul> <p>They should write their ideas on whiteboards or in their books.</p>	<p><b>Other:</b></p> <ul style="list-style-type: none"> <li>• Whiteboards and pens</li> </ul>
Class activity: Who was Catherine?	<p>Children suggest what they think they know about Catherine based on the pictures. Explain that you're going to look through a fact file about Catherine as a class, and they'll be able to find out if they were right.</p> <p>Work through the PowerPoint about Catherine Duleep Singh and her life.</p>	



	<p>Ask the children to reflect on the aspects of Catherine's life that required her to be brave. Ensure you include the following:</p> <ul style="list-style-type: none"> <li>• Speaking up for women's rights</li> <li>• Being herself, even though it meant she will have been treated badly</li> <li>• Helping people who were in danger</li> </ul>	
<p>Pair activity: What would you like to know?</p>	<p>Explain to the children that they are going to continue with their history detective work interviewing Catherine Duleep Singh.</p> <p>In pairs they should identify some questions that they would like to ask her about her life and her experiences.</p>	
<p>Group activity: An interview with Catherine Duleep Singh</p>	<p>An adult should take the role of Catherine Duleep Singh for hot seating.</p> <p>Children take turns ask Catherine questions about her life and experiences.</p> <p><i>Note: The adult in the hot seat can use the fact file ahead of time to ensure that they are able to answer most of the children's questions</i></p>	
<p>Plenary: What do you know?</p>	<p>Ask the children: How did asking questions help you to learn about history today? Think. Pair. Share.</p>	



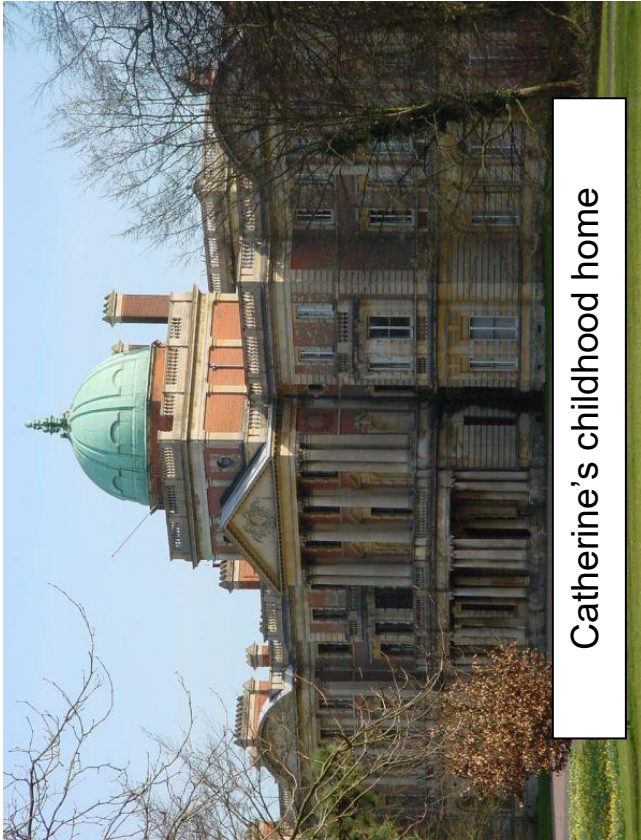
# Resources

## Photo pack









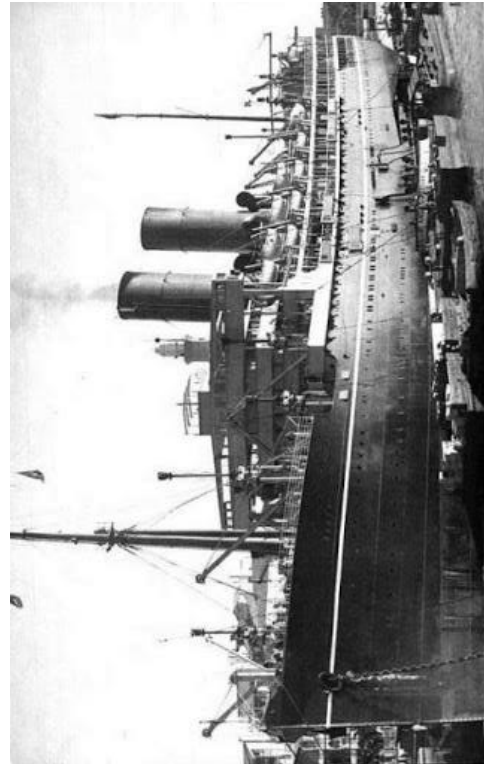
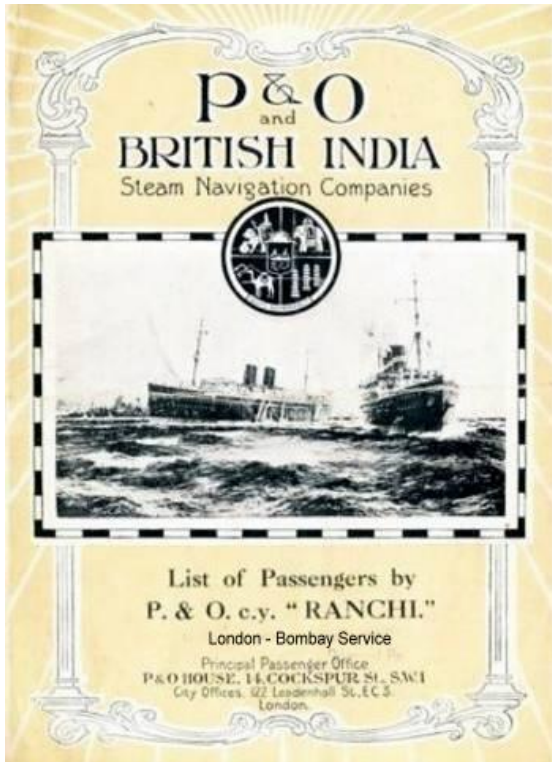
Catherine's childhood home



Catherine's teenage home, in the grounds of Hampton Court Palace.



Catherine's godmother



## Catherine Duleep Singh

Catherine Hilda Duleep Singh was born on 27<sup>th</sup> October 1871. She had 2 sisters, 3 brothers and 2 half-sisters. Her father was Maharaja Duleep Singh, former ruler of Punjab, India. However, he had moved to England after he was deposed by the East India Company. Once in England, he married Catherine's mother Bamba. The family lived in Elvedon Hall, which was very extravagantly decorated. However, when Catherine's father went to India to try and re-establish himself, Catherine and her sisters moved to Hampton Court Palace. This move was on the invitation of their godmother, Queen Victoria. Catherine made her debut and was 'presented in court' in 1895.



Along with her sister Sophia, Catherine was a strong supporter of the suffragist movement which aimed to secure women's right to vote. She was a member of the Fawcett Women's Suffrage Group as well as the National Union of Women's Suffrage Societies (NUWSS) and was involved in numerous events and dinners in support of the movement.

Catherine took the opportunity to tour India in 1903 before she moved to Germany in 1904. She lived in Germany and Switzerland with her partner, Lina Schäfer. Lesbian relationships were frowned upon at the time, however historical archives make no mention of the Duleep Singh family ever being unsupportive of Catherine.

Life in Germany during the rise of the Nazi Party became increasingly difficult for Catherine as a lesbian woman of Indian heritage. Despite this, Catherine and Lina lived in Germany until Lina's death in 1937. They were able to help a number of Jewish families to escape Nazi run Germany in order to seek asylum in the UK. This is something Catherine continued to do after Lina's death and, upon her return to England, she offered German-Jewish refugees somewhere to live.

When she died in 1942, Catherine had been living in Buckinghamshire. She was cremated, and quarter of her ashes were buried next to Lina's coffin in Germany. The remainder were taken to India. In 1997 a Swiss bank account and deposit box were discovered, and it emerged that they had belonged to Catherine and Lina. There was widespread speculation that the deposit box may have contained rare and valuable jewels, however it actually contained a relatively modest amount of money.