



## Frida Kahlo - Secondary

Stonewall's home learning packs can be used by parents or carers looking to support their child's learning or by education staff looking to send work home for their students. There is a primary, secondary and SEND version of each pack, with a list of suggested activities and supporting materials for you to pick and choose from.

Please note that some of the suggested Key Stage 4 materials include nudity in the context of works of art.

Stonewall is a lesbian, gay, bi and trans equality charity working with employers, schools, colleges and services for LGBT acceptance without exception. Find out more about our work here: [www.stonewall.org.uk](http://www.stonewall.org.uk).

*A word on online safety: Talk to your child about what they should do if they see something that makes them feel uncomfortable or that they think they shouldn't be seeing. Use our [Staying Safe Online](#) resource or the [Childnet](#) website to help you.*

### Key Stage 3

- Learn about Frida Kahlo and her work by watching this video: <https://www.youtube.com/watch?v=wfbLR15Bh74>
- Read the Frida Kahlo fact file.
- Make a poster or a PowerPoint Presentation about Frida Kahlo's life.
- Compare Frida Kahlo's work with the work of a different artist, what are the similarities? How do they differ?
- How does Frida Kahlo's work reflect her experiences? Write at least 3 paragraphs to explain.
- Create a self-portrait – can you make it in the style of Frida Kahlo, surrounded by things that represent your life?
- Make a Frida Kahlo jigsaw – stick one of the jigsaw sheets onto a piece of card and cut out the shapes.
- Do the wordsearch.

## Home Learning Pack: Frida Kahlo



- Phone a relative and tell them about Frida Kahlo and her life.

### Key Stage 4

- Explore the information about Frida Kahlo and her work here: <https://artsandculture.google.com/project/frida-kahlo>
- Make a PowerPoint Presentation about Frida Kahlo's life.
- Write a book about Frida Kahlo aimed at children in primary school
- Compare Frida Kahlo's work with the work of a different artist, what are the similarities? How do they differ?
- How did Frida Kahlo's life experiences influence her work as an artist? Write an essay to explain.
- Read this article: <https://artsandculture.google.com/theme/frida-kahlo%E2%80%99s-lasting-impact-on-lgbtq-artists/CglSm6mFqz2HIQ>. Why is Frida Kahlo an LGBT icon? Write a short piece to explain.
- Create a self-portrait – can you make it in the style of Frida Kahlo, surrounded by things that represent your life?
- Phone a relative and tell them about Frida Kahlo and her life.

## Frida Kahlo

Frida Kahlo was born in Mexico in 1907. Her mum was Mexican and her dad was German. She had 2 sisters. When Frida was 6, she caught Polio - this is an illness that effects a person's ability to walk. This illness affected one of Frida's legs and meant that she walked with a limp. Frida was bullied because of her limp. When she was growing up, Frida had lots of interests. She liked art and politics, but she wanted to be a doctor.

There was a bus accident in 1925 and Frida was badly hurt. Lots of her bones were broken and Frida had to spend 3 months in bed.

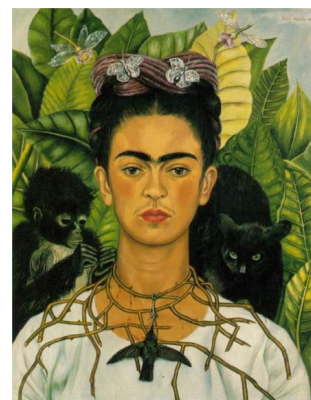
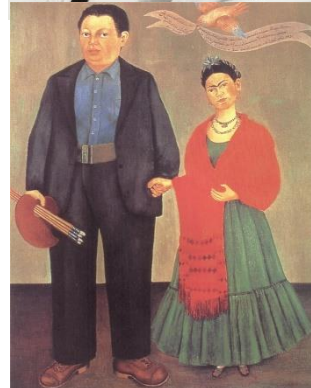
When she was recovering from her injuries Frida spent her time painting. She painted self portraits and paintings of her friends and family. Frida had back pain for the rest of her life. Frida became an artist. She is famous for the way she painted with lots of bright colours. Most of her paintings were self-portraits.

In 1929 Frida Kahlo married a man called Diego Rivera. Diego was also an artist. Frida and Diego moved to America and lived there for years. They lived in different parts of America because of Diego's work. They broke up for many months but got back together again.

Frida's art started to get more popular. Her work was shown in galleries in Mexico, America and France. During this time, Frida made friends with lots of famous artists.

In 1939, Frida and Diego got divorced but they still stayed friends. Frida Kahlo was bi, which means that she had girlfriends and boyfriends. Frida kept being ill and had to have lots of operations. She was finding it difficult to leave the house. Frida and Diego Rivera decided to get married again. Diego looked after Frida.

Frida Kahlo's art is very popular because it gives people hope. Even though Frida had to struggle a lot, she succeeded.





## Frida Kahlo

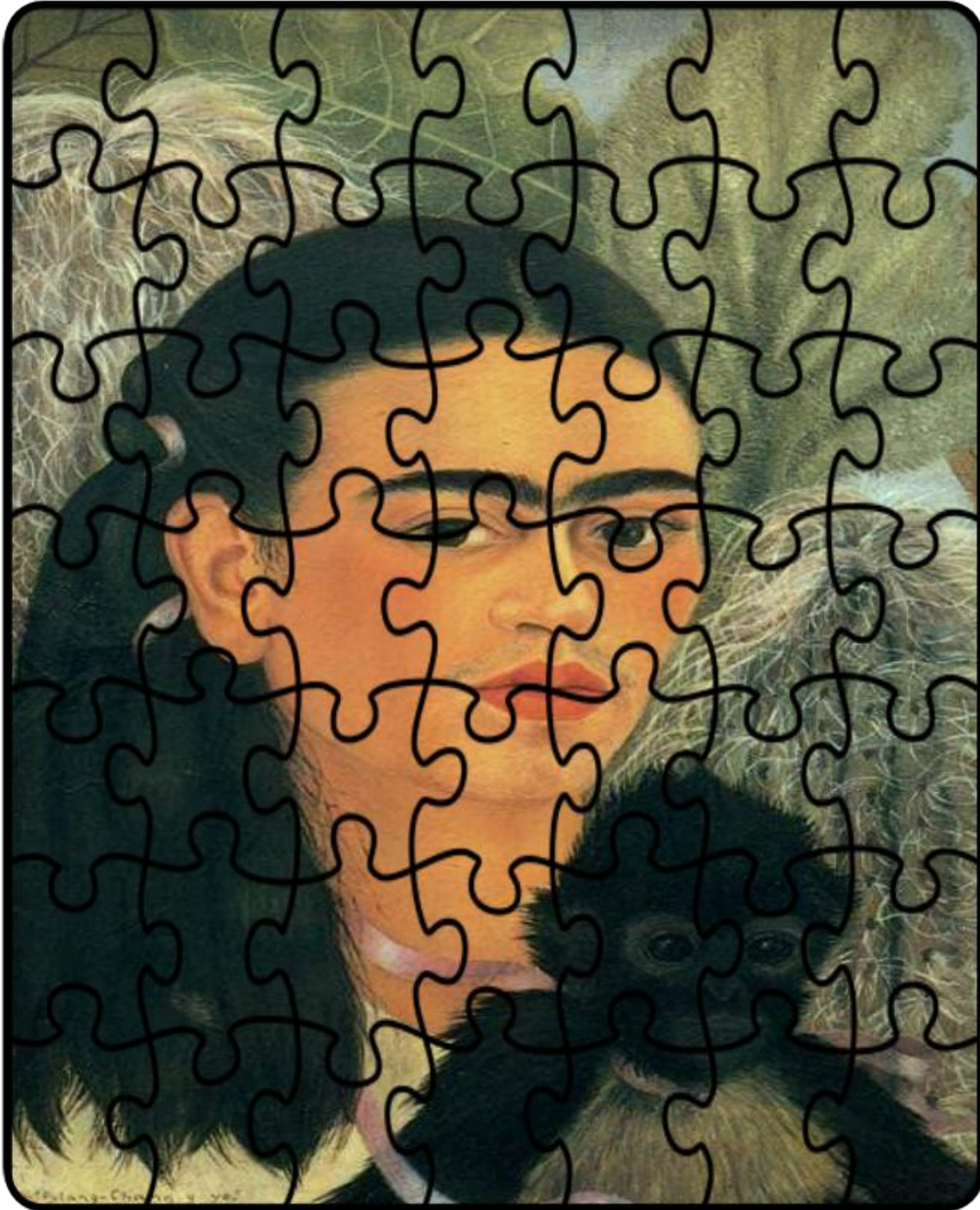
Y B S K L I M E W A N O N H A K K H I V N Y R V T  
Z V P X D I F M I L D V I W W K A B I T G T A J S  
G O O J H P E I A N Z K W M H B H D F J S H N H H  
S W L C H X T C J B H C M C K E Z E A S E L F H A  
P T I L I W Q B B W Z O O B X Q I I B G X T D G Q  
V O O C C G O D T J N L I M P D D L E K R D N O X  
B Y O R Q P G K I L O G O H H I Q L A Z A O U D L  
Y G Q I R E X V A U J U Y Y K F S U E Y U C O J V  
S E O G E A K D R J B C O R O Y Z B A B Q T O P N  
A X R M J R P F T S H H D R E M H F M A Z O B P P  
W L I O E N U Q R O X C U K I D S Z E Y V R X K X  
I T Y C R L V D O A E W N F Q A D I R F T U W Y A  
I N W J F R D K P P L O J J Z R R H I W G S X B A  
L E B Q X T I S D C M O A I W U I S C U Q E Q Q Z  
T D E D L Z H M D M H K B T T T B M A R N F R O H  
L I K R H N F Q D Q M B Q K P S K C C B U B D X V  
G C U R N H M P K S I X E O I H Y M X P P B X Y H  
J C M Y S E C H D N T Z P P B P R D W C O M G I L  
S A B G P H I L E P T U A N M L X I U N F N W M J  
T S K E F W P J I F L U K S W E U E L Y F I T M L  
Q O E J B R O U R A H X U L Z X O G F D L O S P S  
T B I N F G I P R S X Y K V A W T O G Z H I Z G G  
O L W P L O U I A B J X V C N H W G U R B U O O K  
Y P P G W L M H M R M C M G A G R M D P L A C N P  
S F S W I A I L P R J Y J O T T R P E U Q T Y Y B

POLIO  
ACCIDENT  
ILLNESS  
PARROTS  
MONKEYS  
DOG  
MEXICO  
AMERICA  
BI  
DIEGO  
FRIDA  
LIMP  
BULLIED  
COLOURFUL  
PORTRAIT  
MIRROR  
EASEL  
MARRIED  
POPULAR  
DOCTOR

Home Learning Pack: Frida Kahlo



*Stick the picture onto a piece of card, cut out the pieces to make a jigsaw.*



Home Learning Pack: Frida Kahlo



*Stick the picture onto a piece of card, cut out the pieces to make a jigsaw.*



# Home Learning Pack: Frida Kahlo

